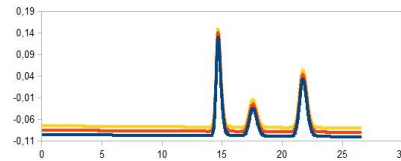
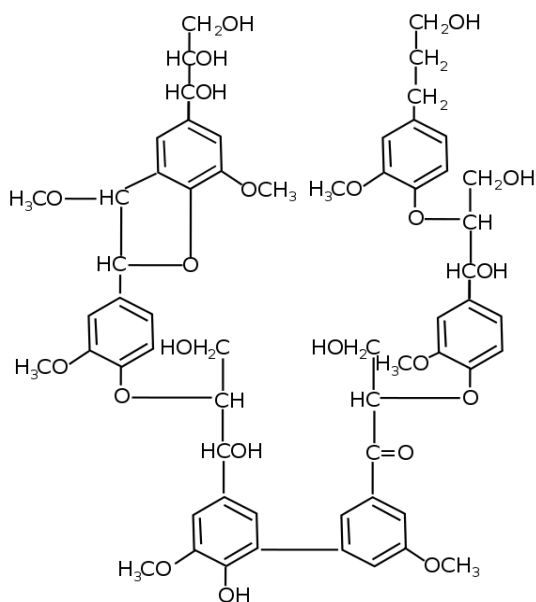
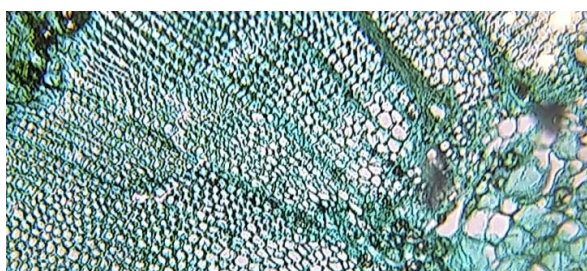


GPC / SEC / HPLC Columns

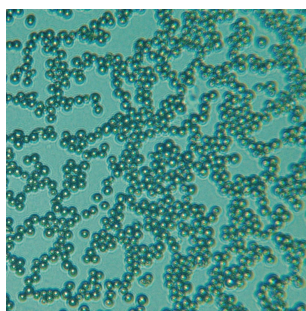
Made by AppliChrom GmbH



AppliChrom Aceton-Aq-Phil-P



Organosolv Lignin



AppliChrom Aceton-AQ-Phil-P GPC-columns for GPC analysis of organic molecules using (80%acetone, 20%water)*.

Organosolv Lignin GPC analysis are now very easy and reliable to perform (Patent pending).

- optimized for GPC analysis of organosolv lignins
- easy and reliable to handle in acetone/water/traces formic acid // 80/20/1 // v/v/v
- compatible with evaporative detection (ELSD, MS)*
- preparative GPC fractionation of organosolv lignin without salt possible
- recycling GPC respective peak recycling GPC with enormous separation efficiency possible for isolation of individual organosolv lignin substances in semipreparative scale
- molecular weight calibration vs. PEO/PEG
- spherical high porous polymeric GPC-media with no silanol activity for pure GPC
- large molecular weight range: 100 – 1 000 000Da
- high pressure stability of 100bar
- high peak and separation capacity
- AppliChrom GPC columns – innovations and quality Made in Germany.

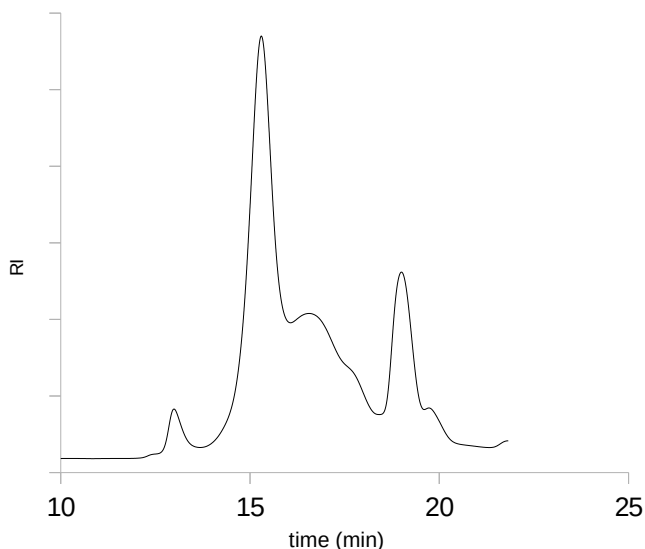
*) ask your ELSD respective your MS-detector supplier for compatibility or your individual detector resistance versus acetone!

AppliChrom Aceton-AQ-Phil GPC Series:

molecular weight range and optimum range of molecular weights

Poresize	Separation range	Optimum resolution range
250	100-70 000Da	100-10 000Da
350	100-1 000 000Da	1000-400 000Da

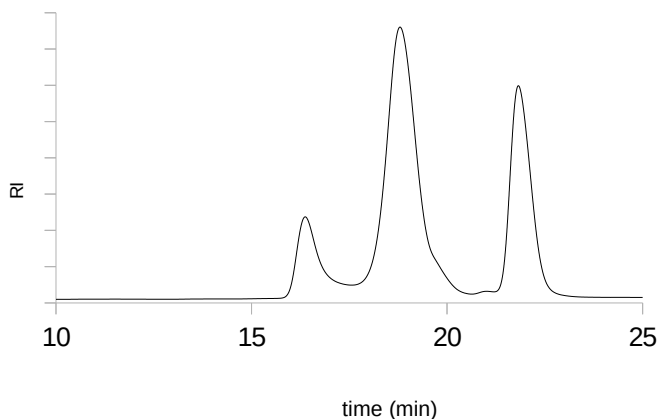
* Eluent 80/20 Aceton/waterv/v, molecular weight calibration vs. PEO/PEG



Analyte: **Organosolv Lignin GPC**
 (range: 100-1.500.000Da)

Column: 2x AppliChrom Aceton-AQ-Phil-P-250,

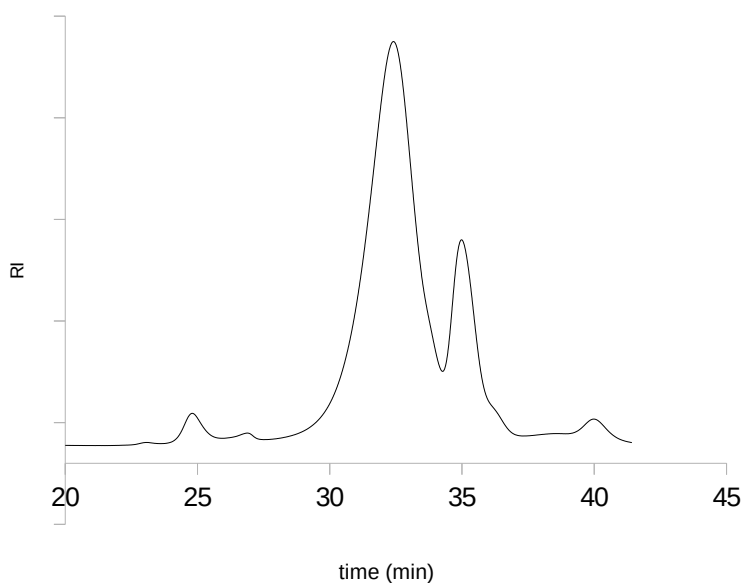
Dimension: ea. 300mm x 8mm
Mobil Phase: acetone/H₂O/formic acid
 80/20/1 v/v/v
Flow: 1.0ml/min
Temperature: 25°C
Detection: RI



Analyte: PEO/PEG GPC
(8 000Da, 1 000Da, 106 Da)

Column: 2x AppliChrom Aceton-AQ-Phil-P-250

Dimension: ea. 300mm x 8mm
Mobil Phase: acetone/H₂O 80/20 v/v
Flow: 1.0ml/min
Temperature: 25°C
Detection: RI

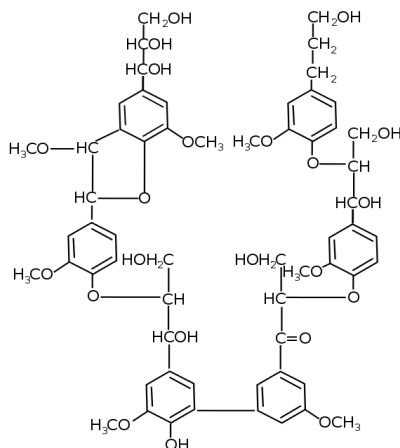


Analyte: Organosolv Lignin GPC

Column: 3x AppliChrom Aceton-AQ-Phil-P-350

Dimension: ea. 300mm x 8mm
Mobil Phase: acetone/H₂O/formic acid 80/20 /1 v/v/v
Flow: 1.0ml/min
Temperature: 25°C
Detection: RI

Catalog #	Description	Dimension	Separation Range
SAAPP2503008 SAAPP250508 SAAPP250308	GPC-Column AppliChrom Aceton-Aq-Phil-P-250	300mm x 8mm 50mm x 8mm 30Mm x 8mm	100 – 70 000Da
SAAPP3503008 SAAPP350508 SAAPP350308	GPC-Column AppliChrom Aceton-Aq-Phil-P-350	300mm x 8mm 50mm x 8mm 30Mm x 8mm	100 – 1 000 000Da



Organosolv Lignin

Inquiry Form For Forwarding to AppliChrom GmbH

To place an order please fill in this form and send it by mail or fax to:

AppliChrom GmbH
Germendorfer Allee 20
D-16515 Oranienburg
Germany

Telephone: +49 (0)3301 579293
Fax: +49 (0)3301 209879
Email: info@applichrom.co
Web: www.applichrom.com

Catalog	Description	Dimension

bulk quantities on request

address

name

company / institute

address

country

telephone number

e-mail

VAT-number

comment

AppliChrom GmbH

+49 (0)3301 579293
info@applichrom.com

AppliChrom
Excellent results are our aim



AppliChrom GmbH
Germendorfer Allee 20
D-16515 Oranienburg
Germany

www.applichrom.com
info@applichrom.com
Phone: +49 (0) 3301 579293
Fax: +49 (0) 3301 209879